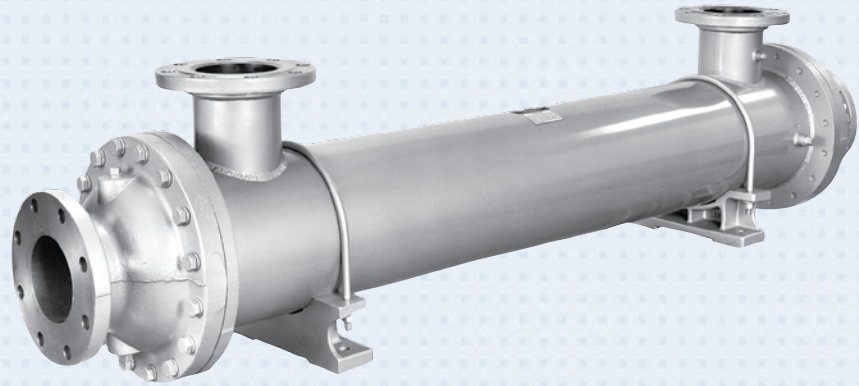


FLUID COOLING | Shell & Tube CA-2000 Series

COPPER & STEEL CONSTRUCTION

Features

- Super High Flow
- Largest Flow Rates & Heat Transfer Available
- ASME Code
- Rugged Steel Construction
- Custom Designs Available
- Competitively Priced
- 3/8" & 5/8" Tubes Available
- Max. 10" Diameter, 12' Long
- 150# ANSI/ASME Flanged Shell Connections (Metric Available)
- Optional Construction on CA-2000 Series: Tubes, Tubesheets, and End Bonnets
- End Bonnets Removable For Servicing
- Saddle Brackets For Incremental Mounting
- ASME Code (Section VIII, Division I) and TEMA-C Construction Available (Consult Factory for Ordering Information)



Ratings

- Maximum Shell Pressure** 150 psi
Maximum Tube Side Pressure 150 psi
Maximum Temperature 300° F

Materials

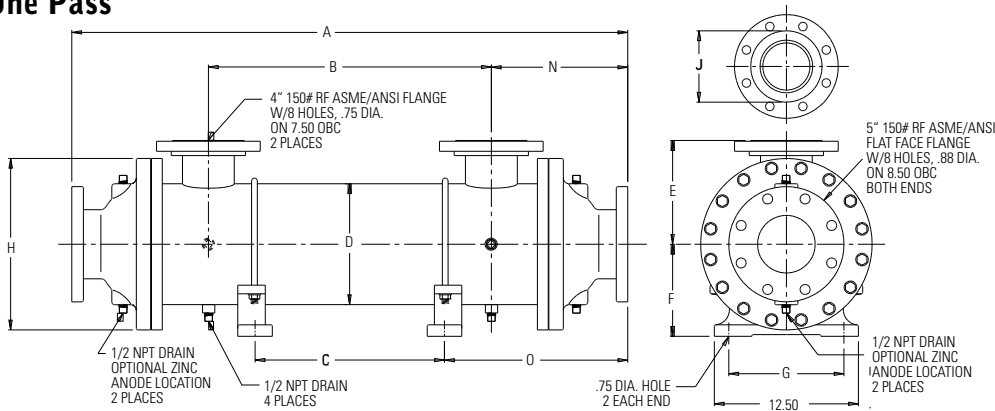
- Headers** Steel
Shell Steel
Shell Connections Steel
Baffles Brass
End Bonnets Cast Iron
Mounting Brackets Steel/Cast Iron
Gaskets Nitrile Rubber/Cellulose Fiber
Nameplate Aluminum Foil

Maximum Flow Rates

Shell Side (GPM)		Tube Side GPM		
6" Baffle	9" Baffle	One Pass	Two Pass	Four Pass
210	320	652	326	163

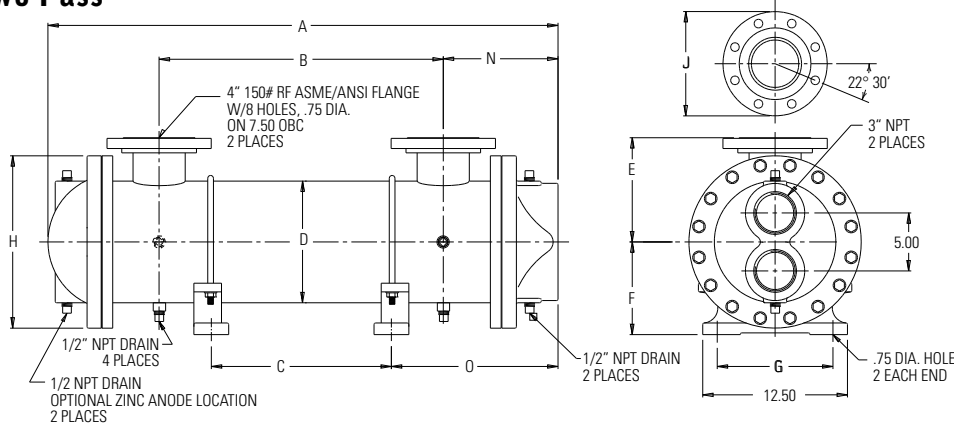
Dimensions

One Pass



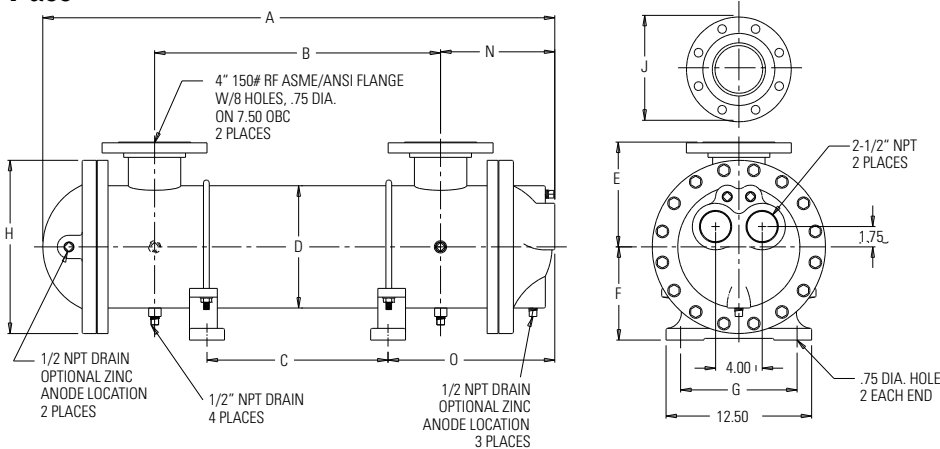
Model	A	N	O
CA-2036	49.64	11.82	15.92
CA-2048	61.64		
CA-2060	73.64		
CA-2072	85.64		
CA-2084	97.64		
CA-2096	109.64		
CA-20108	121.64		
CA-20120	133.64		
CA-20132	145.64		
CA-20144	157.64		

Two Pass



Model	A	N	O
CA-2036	45.55	9.90	14.38
CA-2048	57.55		
CA-2060	69.55		
CA-2072	81.55		
CA-2084	93.55		
CA-2096	105.55		
CA-20108	117.55		
CA-20120	129.55		
CA-20132	141.55		
CA-20144	153.55		

Four Pass



Model	A	N	O
CA-2036	45.34	9.78	13.78
CA-2048	57.34		
CA-2060	69.34		
CA-2072	81.34		
CA-2084	93.34		
CA-2096	105.34		
CA-20108	117.34		
CA-20120	129.34		
CA-20132	141.34		
CA-20144	153.34		

Model	B	C	D	E	F	G	H	J
CA-2036	26	18	10.5 DIA	9	8	10	14.88 DIA	6.19 DIA Raised Face 2 Places
CA-2048	38	30						
CA-2060	50	42						
CA-2072	62	54						
CA-2084	74	66						
CA-2096	86	78						
CA-20108	98	90						
CA-20120	110	102						
CA-20132	122	114						
CA-20144	134	126						

NOTE: We reserve the right to make reasonable design changes without notice. Dimensions are in inches.



